

FRIGIDAIRE® PTAC COLLECTION

AIR CONDITIONERS



FRIGIDAIRE®

PTAC

The Frigidaire® PTAC Collection offers flexibility for any application. Simple, intuitive controls and options, including remote thermostats, allow users to create the ultimate relaxing atmosphere. Efficient, versatile designs that save energy are better for budgets and the environment. That's why Frigidaire® PTAC products offer cost-saving features — including our Energy-Saver function — that maximize energy efficiency while keeping guests comfortable.



KEY FEATURES

Corrosion Guard

All Frigidaire® PTACs come standard with corrosion guard, to increase system and component durability and to protect system and components in coastal areas where air-sea salt content is higher than standard applications. All coils are treated with a dual hydrophilic coating, and there is an added hydrophilic coating for all connecting plates. Standard materials have been replaced with stainless steel for critical components such as hardware, condenser side panel, compressor hardware and condenser fan hardware. Special corrosion-guard paint is used on the drain pan to ensure the integrity of unit mounts to the chassis.

Dry Mode

For increased comfort and humidity management, an added Dry Mode is standard on all Frigidaire® PTACs. This mode feature will help manage and reduce the humidity content within the living space, making it more comfortable. In Dry Mode, the unit will modulate cooling at low fan speed until the room temperature is 4°F below the room temperature setting regardless of fan mode selection.

Effortless Operation

Simple room controls are easy for guests to operate, ensuring a relaxing and enjoyable visit every time. Features such as Effortless™ Restart and easy-to-use LCD controls create fewer maintenance calls for management.

Intuitive Control

Frigidaire® PTACs are designed for adaptability for any climate or guest preference. With the convenience of wall or optional remote thermostats, guests can control the temperature and air movement to create their ultimate comfort zone. Quiet fan motors ensure peaceful sleep.

Low Maintenance

Frigidaire® has a reputation for durability, easy maintenance and reliable parts and service, so you're sure to get the highest-quality performance. Plus, the Energy-Saver function maximizes energy efficiency while keeping guests comfortable.

PTAC Models

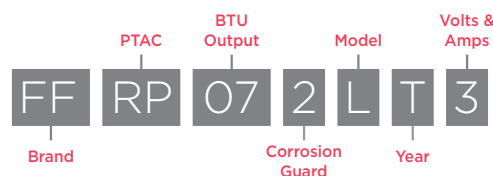
Cool/Electric Heat

Deliver comfort and convenience with electric heat-element models designed to efficiently cool and dehumidify, as well as heat. Available in a variety of BTU ratings to handle room sizes from 300 sq. ft. to 830 sq. ft.

Cool/Heat Pump with Backup Electric Heat

Designed to cool, heat and dehumidify for greater efficiency in cooler climates, these electric heat-element models feature an additional heat pump that extracts heat from the air and transfers it inside, increasing energy efficiency. As the outdoor temperature drops, the PTAC will automatically switch from heat pump to electric heat as necessary. Available in a variety of BTU ratings.

NOMENCLATURE



Brand – 1st & 2nd Digit

FF Frigidaire

Product Category – 3rd & 4th Digit

RP PTAC

BTU Output – 5th & 6th Digit

07 7,200/7,000

09 9,400/9,200

12 11,800/11,600

15 14,500/14,200

Corrosion Guard – 7th Digit

2 Corrosion Guard

Heat – 8th Digit

L Electric

H Heat Pump

Year – 9th Digit

T 2017

Volts & Amps – 10th Digit

2 230/208V - 15A

3 230/208V - 20A

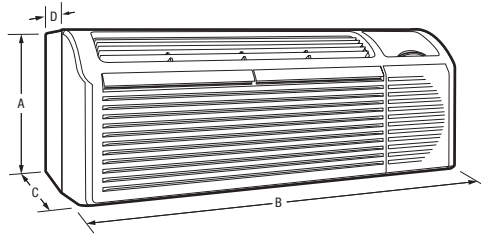
4 230/208V - 30A

5 265V - 15A

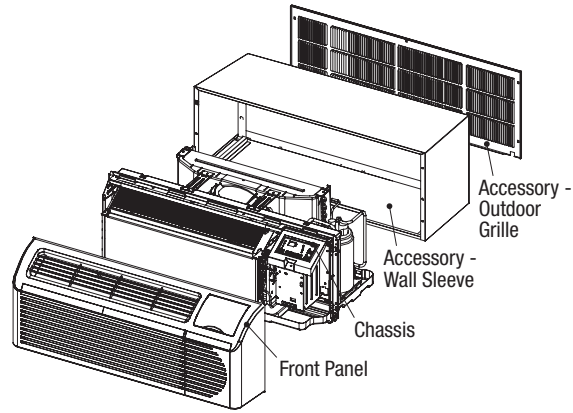
6 265V - 20A

7 265V - 30A

PTAC SPECIFICATIONS



PTAC



WALL SLEEVE & OUTDOOR GRILLE INSTALLATION

AIR CONDITIONERS WITH ELECTRIC HEAT

| MODEL | | FFRP072LT2 | FFRP072LT3 | FFRP092LT2 | FFRP092LT3 | FFRP122LT3 | FFRP152LT3 | FFRP152LT4 |
|---------------------------|------------------------------------|---------------------|---------------------|---------------------|---------------------|---------------------|---------------------|---------------------|
| PERFORMANCE (230/208V) | BTU (Cool) | 7,200/7,000 | 7,200/7,000 | 9,400/9,200 | 9,400/9,200 | 11,800/11,600 | 14,500/14,200 | 14,500/14,200 |
| | BTU (Electric Heater) | 8,300/6,800 | 11,700/9,600 | 8,300/6,800 | 11,700/9,600 | 11,700/9,600 | 11,700/9,600 | 17,000/13,900 |
| | Dehumidification (Pints/Hour) | 1.7 | 1.7 | 2.1 | 2.1 | 2.7 | 3.5 | 3.5 |
| | Cool Area (Approx. Sq. Ft.) | 300 | 300 | 450 | 450 | 620 | 830 | 830 |
| | Energy Efficiency Ratio | 13.0 | 13.0 | 12.1 | 12.1 | 11.6 | 10.4 | 10.4 |
| | Air Volume CFM (High/Low) | 312/282 | 312/282 | 330/294 | 330/294 | 341/306 | 341/306 | 341/306 |
| | Dry Mode | Yes | Yes | Yes | Yes | Yes | Yes | Yes |
| | Noise Level dB (High/Low) | 50/48 | 50/48 | 52/50 | 52/50 | 53/50 | 54/51 | 54/51 |
| ELECTRICAL | Volts/Hertz | 230/208V/60Hz | 230/208V/60Hz | 230/208V/60Hz | 230/208V/60Hz | 230/208V/60Hz | 230/208V/60Hz | 230/208V/60Hz |
| | Amps (Cool) | 2.7/2.9 | 2.7/2.9 | 3.7/3.9 | 3.7/3.9 | 4.9/5.1 | 6.2/6.7 | 6.2/6.7 |
| | Amps (Electric Heater) | 10.7/9.7 | 15.0/13.6 | 10.7/9.7 | 15.0/13.6 | 15.0/13.6 | 15.0/13.6 | 21.8/19.7 |
| | Watts (Cool) | 550/535 | 550/535 | 775/760 | 775/760 | 1,015/1,000 | 1,390/1,365 | 1,390/1,365 |
| | Watts (Electric Heater) | 2,450/2,000 | 3,450/2,820 | 2,450/2,000 | 3,450/2,820 | 3,450/2,820 | 3,450/2,820 | 5,000/4,089 |
| | Cable Included | Yes | Yes | Yes | Yes | Yes | Yes | Yes |
| | Length of Power Cord | 5.5' | 5.5' | 5.5' | 5.5' | 5.5' | 5.5' | 5.5' |
| | Circuit Breaker | 15A | 20A | 15A | 20A | 20A | 20A | 30A |
| SPECIFICATIONS | Plug Type (NEMA) | LCDI (6-15P) | LCDI (6-20P) | LCDI (6-15P) | LCDI (6-20P) | LCDI (6-20P) | LCDI (6-20P) | LCDI (6-30P) |
| | Refrigerant/Charge | R410a/22.90 oz. | R410/22.90 oz. | R410a/23.60 oz. | R410/23.60 oz. | R410a/35.27 oz. | R410a/35.27 oz. | R410a/35.27 oz. |
| | Product Weight | 104 Lbs. | 104 Lbs. | 113 Lbs. | 113 Lbs. | 116 Lbs. | 118 Lbs. | 120 Lbs. |
| | Shipping Weight (Approx.) | 128 Lbs. | 128 Lbs. | 137 Lbs. | 137 Lbs. | 140 Lbs. | 142 Lbs. | 144 Lbs. |
| | A - Height x B - Width x C - Depth | 16" x 42" x 21-3/4" | 16" x 42" x 21-3/4" | 16" x 42" x 21-3/4" | 16" x 42" x 21-3/4" | 16" x 42" x 21-3/4" | 16" x 42" x 21-3/4" | 16" x 42" x 21-3/4" |
| | Inside Sleeve Depth | 13-3/4" | 13-3/4" | 13-3/4" | 13-3/4" | 13-3/4" | 13-3/4" | 13-3/4" |
| | Height | 16-1/4" | 16-1/4" | 16-1/4" | 16-1/4" | 16-1/4" | 16-1/4" | 16-1/4" |
| | Width | 42-1/4" | 42-1/4" | 42-1/4" | 42-1/4" | 42-1/4" | 42-1/4" | 42-1/4" |

| MODEL | | FFRP072LT5 | FFRP072LT6 | FFRP092LT5 | FFRP092LT6 | FFRP122LT6 | FFRP152LT6 | FFRP152LT7 |
|-----------------------|------------------------------------|---------------------|---------------------|---------------------|---------------------|---------------------|---------------------|---------------------|
| PERFORMANCE (265V) | BTU (Cool) | 7,200 | 7,200 | 9,400 | 9,400 | 11,800 | 14,500 | 14,500 |
| | BTU (Electric Heater) | 8,300 | 11,700 | 8,300 | 11,700 | 11,700 | 11,700 | 17,000 |
| | Dehumidification (Pints/Hour) | 1.7 | 1.7 | 2.1 | 2.1 | 2.7 | 3.5 | 3.5 |
| | Cool Area (Approx. Sq. Ft.) | 300 | 300 | 450 | 450 | 620 | 830 | 830 |
| | Energy Efficiency Ratio | 13.0 | 13.0 | 12.1 | 12.1 | 11.6 | 10.4 | 10.4 |
| | Air Volume CFM (High/Low) | 312/282 | 312/282 | 330/294 | 330/294 | 341/306 | 341/306 | 341/306 |
| | Dry Mode | Yes | Yes | Yes | Yes | Yes | Yes | Yes |
| | Noise Level dB (High/Low) | 50/48 | 50/48 | 52/50 | 52/50 | 53/50 | 54/51 | 54/51 |
| ELECTRICAL | Volts/Hertz | 265V/60Hz | 265V/60Hz | 265V/60Hz | 265V/60Hz | 265V/60Hz | 265V/60Hz | 265V/60Hz |
| | Amps (Cool) | 2.4 | 2.4 | 3.3 | 3.3 | 4.2 | 5.4 | 5.4 |
| | Amps (Electric Heater) | 9.3 | 13.1 | 9.3 | 13.1 | 13.0 | 13.0 | 18.9 |
| | Watts (Cool) | 550 | 550 | 775 | 775 | 1,015 | 1,390 | 1,390 |
| | Watts (Electric Heater) | 2,450 | 3,450 | 2,450 | 3,450 | 3,450 | 3,450 | 5,000 |
| | Cable Included | Yes | Yes | Yes | Yes | Yes | Yes | Yes |
| | Length of Power Cord | 2.3' | 2.3' | 2.3' | 2.3' | 2.3' | 2.3' | 2.3' |
| | Circuit Breaker | 15A | 20A | 15A | 20A | 20A | 20A | 30A |
| SPECIFICATIONS | Plug Type (NEMA) | LCDI (7-15P) | LCDI (7-20P) | LCDI (7-15P) | LCDI (7-20P) | LCDI (7-20P) | LCDI (7-20P) | LCDI (7-30P) |
| | Refrigerant/Charge | R410a/22.9 oz. | R410a/22.9 oz. | R410a/23.6 oz. | R410a/23.6 oz. | R410a/35.27 oz. | R410a/35.27 oz. | R410a/35.27 oz. |
| | Product Weight | 104 Lbs. | 104 Lbs. | 113 Lbs. | 113 Lbs. | 116 Lbs. | 117 Lbs. | 119 Lbs. |
| | Shipping Weight (Approx.) | 128 Lbs. | 128 Lbs. | 137 Lbs. | 137 Lbs. | 140 Lbs. | 141 Lbs. | 143 Lbs. |
| | A - Height x B - Width x C - Depth | 16" x 42" x 21-3/4" | 16" x 42" x 21-3/4" | 16" x 42" x 21-3/4" | 16" x 42" x 21-3/4" | 16" x 42" x 21-3/4" | 16" x 42" x 21-3/4" | 16" x 42" x 21-3/4" |
| | Inside Sleeve Depth | 13-3/4" | 13-3/4" | 13-3/4" | 13-3/4" | 13-3/4" | 13-3/4" | 13-3/4" |
| | Height | 16-1/4" | 16-1/4" | 16-1/4" | 16-1/4" | 16-1/4" | 16-1/4" | 16-1/4" |
| | Width | 42-1/4" | 42-1/4" | 42-1/4" | 42-1/4" | 42-1/4" | 42-1/4" | 42-1/4" |

PTAC SPECIFICATIONS

AIR CONDITIONERS/HEAT PUMPS WITH BACKUP ELECTRIC HEAT

| MODEL | | FFRP072HT2 | FFRP072HT3 | FFRP092HT2 | FFRP092HT3 | FFRP122HT3 | FFRP152HT3 | FFRP152HT4 |
|---------------------------|------------------------------------|---------------------|---------------------|---------------------|---------------------|---------------------|---------------------|---------------------|
| PERFORMANCE (230/208V) | BTU (Cool) | 7,200/7,000 | 7,200/7,000 | 9,400/9,200 | 9,400/9,200 | 11,800/11,600 | 14,500/14,200 | 14,500/14,200 |
| | BTU (Electric Heat) | 8,300/6,800 | 11,700/9,600 | 8,300/6,800 | 11,700/9,600 | 11,700/9,600 | 11,700/9,600 | 17,000/13,900 |
| | BTU (Heat Pump) | 6,000/5,800 | 6,000/5,800 | 8,300/8,100 | 8,300/8,100 | 10,600/10,400 | 13,300/13,000 | 13,300/13,000 |
| | Dehumidification (Pints/Hour) | 1.7 | 1.7 | 2.1 | 2.1 | 2.7 | 3.5 | 3.5 |
| | Cool Area (Approx. Sq. Ft.) | 300 | 300 | 450 | 450 | 620 | 830 | 830 |
| | Energy Efficiency Ratio | 13.0 | 13.0 | 12.1 | 12.1 | 11.6 | 10.4 | 10.4 |
| | Air Volume CFM (High/Low) | 312/282 | 312/282 | 330/294 | 330/294 | 341/306 | 341/306 | 341/306 |
| | Dry Mode | Yes | Yes | Yes | Yes | Yes | Yes | Yes |
| | Noise Level dB (High/Low) | 50/48 | 50/48 | 52/50 | 52/50 | 53/50 | 54/51 | 54/51 |
| ELECTRICAL | Volts/Hertz | 230/208V/60Hz | 230/208V/60Hz | 230/208V/60Hz | 230/208V/60Hz | 230/208V/60Hz | 230/208V/60Hz | 230/208V/60Hz |
| | Amps (Cool) | 2.7/2.9 | 2.7/2.9 | 3.7/3.9 | 3.7/3.9 | 4.9/5.1 | 6.2/6.7 | 6.2/6.7 |
| | Amps (Backup Electric Heat) | 10.7/9.7 | 15.0/13.6 | 10.7/9.7 | 15.0/13.6 | 15.0/13.6 | 15.0/13.6 | 21.8/19.7 |
| | Amps (Heat Pump) | 2.4/2.6 | 2.4/2.6 | 3.2/3.4 | 3.2/3.4 | 4.2/4.7 | 6.2/6.7 | 6.2/6.7 |
| | Watts (Cool) | 550/535 | 550/535 | 775/760 | 775/760 | 1,015/1,000 | 1,390/1,365 | 1,390/1,365 |
| | Watts (Backup Electric Heat) | 2,450/2,000 | 3,450/2,820 | 2,450/2,000 | 3,450/2,820 | 3,450/2,820 | 3,450/2,820 | 5,000/4,089 |
| | Watts (Heat Pump) | 485/470 | 485/470 | 695/675 | 695/675 | 910/895 | 1,255/1,225 | 1,255/1,225 |
| | Cable Included | Yes | Yes | Yes | Yes | Yes | Yes | Yes |
| | Length of Power Cord | 5.5' | 5.5' | 5.5' | 5.5' | 5.5' | 5.5' | 5.5' |
| | Circuit Breaker | 15A | 20A | 15A | 20A | 20A | 20A | 30A |
| SPECIFICATIONS | Refrigerant/Charge | R410a/33.9 oz. | R410a/33.9 oz. | R410a/33.9 oz. | R410a/33.9 oz. | R410a/35.3 oz. | R410a/38.8 oz. | R410a/38.8 oz. |
| | Product Weight | 108 Lbs. | 108 Lbs. | 117 Lbs. | 117 Lbs. | 118 Lbs. | 122 Lbs. | 122 Lbs. |
| | Shipping Weight (Approx.) | 132 Lbs. | 132 Lbs. | 141 Lbs. | 141 Lbs. | 142 Lbs. | 146 Lbs. | 146 Lbs. |
| | A - Height x B - Width x C - Depth | 16" x 42" x 21-3/4" | 16" x 42" x 21-3/4" | 16" x 42" x 21-3/4" | 16" x 42" x 21-3/4" | 16" x 42" x 21-3/4" | 16" x 42" x 21-3/4" | 16" x 42" x 21-3/4" |
| | Inside Sleeve Depth | 13-3/4" | 13-3/4" | 13-3/4" | 13-3/4" | 13-3/4" | 13-3/4" | 13-3/4" |
| | Height | 16-1/4" | 16-1/4" | 16-1/4" | 16-1/4" | 16-1/4" | 16-1/4" | 16-1/4" |
| | Width | 42-1/4" | 42-1/4" | 42-1/4" | 42-1/4" | 42-1/4" | 42-1/4" | 42-1/4" |

| MODEL | | FFRP072HT5 | FFRP072HT6 | FFRP092HT5 | FFRP092HT6 | FFRP122HT6 | FFRP152HT6 | FFRP152HT7 |
|-----------------------|------------------------------------|---------------------|---------------------|---------------------|---------------------|---------------------|---------------------|---------------------|
| PERFORMANCE (265V) | BTU (Cool) | 7,200 | 7,200 | 9,400 | 9,400 | 11,800 | 14,500 | 14,500 |
| | BTU (Electric Heat) | 8,300 | 11,700 | 8,300 | 11,700 | 11,700 | 11,700 | 17,000 |
| | BTU (Heat Pump) | 6,000 | 6,000 | 8,300 | 8,300 | 10,600 | 13,300 | 13,300 |
| | Dehumidification (Pints/Hour) | 1.7 | 1.7 | 2.1 | 2.1 | 2.7 | 3.5 | 3.5 |
| | Cool Area (Approx. Sq. Ft.) | 300 | 300 | 450 | 450 | 620 | 830 | 830 |
| | Energy Efficiency Ratio | 13.0 | 13.0 | 12.1 | 12.1 | 11.6 | 10.4 | 10.4 |
| | Air Volume CFM (High/Low) | 312/282 | 312/282 | 330/294 | 330/294 | 341/306 | 341/306 | 341/306 |
| | Dry Mode | Yes | Yes | Yes | Yes | Yes | Yes | Yes |
| | Noise Level dB (High/Low) | 50/48 | 50/48 | 52/50 | 52/50 | 53/50 | 54/51 | 54/51 |
| ELECTRICAL | Volts/Hertz | 265V/60Hz | 265V/60Hz | 265V/60Hz | 265V/60Hz | 265V/60Hz | 265V/60Hz | 265V/60Hz |
| | Amps (Cool) | 2.4 | 2.4 | 3.3 | 3.3 | 4.2 | 5.4 | 5.4 |
| | Amps (Backup Electric Heat) | 9.3 | 13.1 | 9.3 | 13.1 | 13.0 | 13.0 | 18.9 |
| | Amps (Heat Pump) | 2.2 | 2.2 | 3.1 | 3.1 | 3.7 | 5.2 | 5.2 |
| | Watts (Cool) | 550 | 550 | 775 | 775 | 1,015 | 1,390 | 1,390 |
| | Watts (Backup Electric Heat) | 2,450 | 3,450 | 2,450 | 3,450 | 3,450 | 3,450 | 5,000 |
| | Watts (Heat Pump) | 485 | 485 | 695 | 695 | 910 | 1,255 | 1,255 |
| | Cable Included | Yes | Yes | Yes | Yes | Yes | Yes | Yes |
| | Length of Power Cord | 2.3' | 2.3' | 2.3' | 2.3' | 2.3' | 2.3' | 2.3' |
| | Circuit Breaker | 15A | 20A | 15A | 20A | 20A | 20A | 30A |
| SPECIFICATIONS | Refrigerant/Charge | R410a/33.9 oz. | R410a/33.9 oz. | R410a/33.9 oz. | R410a/33.9 oz. | R410a/35.3 oz. | R410a/38.8 oz. | R410a/38.8 oz. |
| | Product Weight | 108 Lbs. | 108 Lbs. | 116 Lbs. | 116 Lbs. | 120 Lbs. | 120 Lbs. | 122 Lbs. |
| | Shipping Weight (Approx.) | 132 Lbs. | 132 Lbs. | 140 Lbs. | 140 Lbs. | 144 Lbs. | 144 Lbs. | 146 Lbs. |
| | A - Height x B - Width x C - Depth | 16" x 42" x 21-3/4" | 16" x 42" x 21-3/4" | 16" x 42" x 21-3/4" | 16" x 42" x 21-3/4" | 16" x 42" x 21-3/4" | 16" x 42" x 21-3/4" | 16" x 42" x 21-3/4" |
| | Inside Sleeve Depth | 13-3/4" | 13-3/4" | 13-3/4" | 13-3/4" | 13-3/4" | 13-3/4" | 13-3/4" |
| | Height | 16-1/4" | 16-1/4" | 16-1/4" | 16-1/4" | 16-1/4" | 16-1/4" | 16-1/4" |
| | Width | 42-1/4" | 42-1/4" | 42-1/4" | 42-1/4" | 42-1/4" | 42-1/4" | 42-1/4" |

**The Industry's
Longest Standard Warranty**

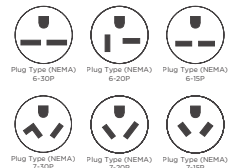
Two Years
Full Parts and labor

Five Years
Limited Parts and Labor Coverage
on the Sealed Refrigeration System

*All models come with Corrosion Guard.
Specifications subject to change.
Commercial Grade Warranty - 2 year full parts
and labor/5 year sealed system.
Contact Commercial Call Center for Warranty
and Service Concerns at 1.866.942.1567*



Plug Type:



NOTE: For planning purposes only. Always consult local and national electric and gas codes.
Refer to Product Installation Guide for detailed installation instructions on the web at frigidaire.com

PTAC INSTALLATION ACCESSORIES



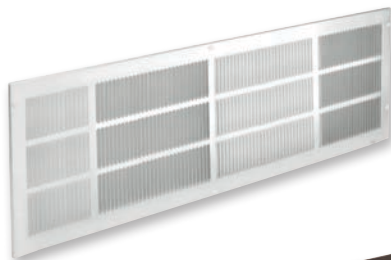
**Metal
Wall Sleeve**



**Polymer
Wall Sleeve**

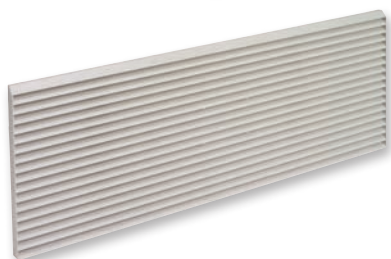
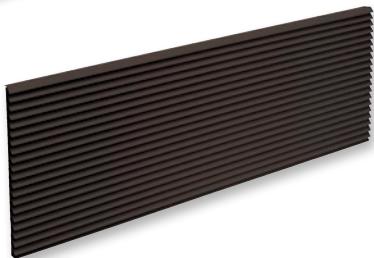


**Condensation Universal
Drain Kit**



**Stamped
Aluminum
Grille**

**Architectural
Aluminum
Grille**



**Polymer
Architectural
Grille**

Wall Sleeves and Drain Kit

Metal Wall Sleeve & Accessories

| | |
|-------------------|---------------------------------|
| 5304482701 | Steel Sleeve - Insulated |
| 5304483759 | 16" Extended Sleeve - Insulated |
| 5308815304 | 18" Extended Sleeve - Insulated |
| 5308815305 | 24" Extended Sleeve - Insulated |
| 5304483760 | 3" Sleeve Adapter |

These fully insulated sleeves are made of electro-galvanized steel that resists corrosion, and welded areas are sealed with a rust preventive. White powder coating matches PTAC units. Sliding keyhole grille attachments enable easy, one-person installation from the inside

Polymer Wall Sleeve

| | |
|-------------------|-----------|
| 5308815302 | Insulated |
|-------------------|-----------|

Utilizes fiberglass-reinforced polyester compound to produce a durable, noncorrosive wall case that provides superior sound absorption, reduces heat loss and prevents sleeve sweating.

(Requires use of a Polymer Architectural Grille.)

Condensation Universal Drain Kit

| | |
|-------------------|--------|
| 5304480570 | 1-Pack |
|-------------------|--------|

Controls condensate from the PTAC unit and can be used for exterior or interior drain systems. Includes 1/2" O.D. copper drain tubes with a short right angle tube and a 6" straight tube to suit the application. (Recommended for all new sleeve installations.)

Outdoor Grilles

Stamped Aluminum Outdoor Grille

| | |
|-------------------|--------------------------------|
| 5304480557 | Clear Anodized Aluminum Finish |
|-------------------|--------------------------------|

Cost-effective, one-piece stamped grille is made from durable anodized aluminum. The grille is lightweight, has a clear finish and is easy to install from inside the room.

Architectural Aluminum Outdoor Grilles

| | |
|-------------------|--------------------------------|
| 5304480558 | Clear Anodized Aluminum Finish |
| 5308815313 | Dark Brown |
| 530448055X | Customized Color |

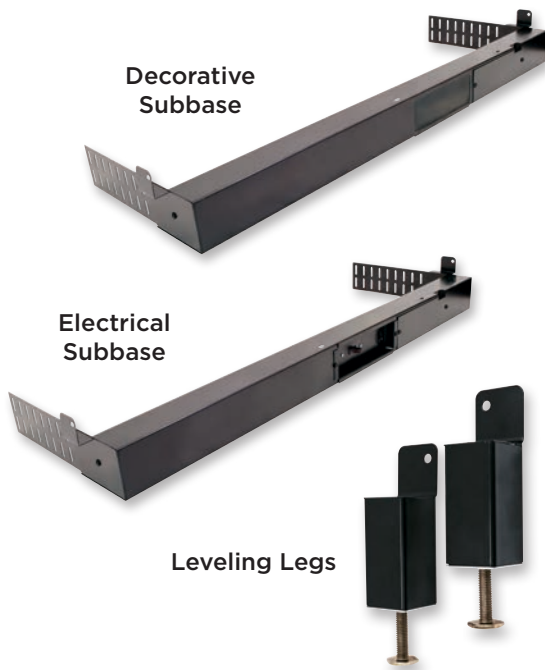
Enhances the appearance of any building. Made of a durable, anodized aluminum that offers weather resistance. Sliding keyhole attachment enables easy installation onto Frigidaire® metal wall sleeve.

Polymer Architectural Outdoor Grilles

| | |
|-------------------|--------------|
| 5308815310 | Brown |
| 5308815312 | Alpine Beige |

Blends with most building exteriors. Its durable design offers protection, has an enhanced appearance and provides superior weather resistance. (Requires use of a Polymer Wall Sleeve.)

PTAC INSTALLATION ACCESSORIES



Decorative Subbase

Electrical Subbase

Leveling Legs



Air Filters



FFTSTATWL

Wall Thermostats



5304483050



Lateral Duct Kit

Subbases and Leveling Legs

Decorative Subbase

5308815315 Black

Made of heavy-gauge steel to provide support for the wall sleeve, the subbase mounts directly to the wall sleeve and has adjustable leveling legs.

Black Electrical Subbases

5304482886 230V/15A

5304482891 265V/30A

5304482888 230V/30A

5304482890 265V/20A

5304482887 230V/20A

5304482698

265V Subbase Disconnect Switch

5304490211

Hardwire Kit, Conduit and Plate

(For 230V and 265V)

Offers the same features as the decorative subbase, plus a factory-installed electrical junction box containing a receptacle for corded PTAC units.

Leveling Legs

5304480575

Attach easily to the wall sleeve and offer accurate leveling and support for units without a subbase. Adjustable from 3-1/4" to 5-1/2".

Air Filters

Air Filters

5304482892 10-Pack

Changing filters periodically ensures a healthy room environment, proper airflow, temperature control and energy efficiency.

Wall Thermostats

Wireless Digital Wall Thermostat

FFTSTATWL Non-Programmable (Includes Wireless Receiver)

Allows control without having to worry about wiring. Easy to install and use. Large intuitive LCD screen improves user interaction.

Wired Digital Wall Thermostats

5304482700 Programmable

5304483050 Non-Programmable

Offers auto-changeover, 2-stage heating and cooling, as well as emergency heating mode for heat pump.

Laminated Insert

FPTAC0511

Informs guests that unit is controlled by wall thermostat.

Miscellaneous

Lateral Duct Kit

5304490206

Allows one PTAC unit to heat or cool two rooms. Kit mounts to wall sleeve and can be installed for either right- or left-side duct applications.

Baffle Kit

5304484585

Baffle Kit for use on non-standard grilles.



FRIGIDAIRE®